

**Zebrafish fabp10a Antibody (Center)**  
**Purified Rabbit Polyclonal Antibody (Pab)**  
**Catalog # AP20693c****Specification**

---

**Zebrafish fabp10a Antibody (Center) - Product Information**

Application	WB,E
Primary Accession	<a href="#">Q9I8L5</a>
Reactivity	Zebrafish
Host	Rabbit
Clonality	Polyclonal
Isotype	Rabbit IgG
Antigen Region	47-80

**Zebrafish fabp10a Antibody (Center) - Additional Information****Gene ID** 171481**Other Names**

Fatty acid-binding protein 10-A, liver basic, Zf-FABP10, Zf-Lb-FABP, Fatty acid-binding protein, liver, Liver bile acid-binding protein, L-BABP, z-L-BABP, Liver-type fatty acid-binding protein, L-FABP, Liver-type FABP, fabp10a, fabp10

**Target/Specificity**

This Zebrafish fabp10a antibody is generated from a rabbit immunized with a KLH conjugated synthetic peptide between 47-80 amino acids of zebrafish fabp10a.

**Dilution**

WB~~1:1000

E~~Use at an assay dependent concentration.

**Format**

Purified polyclonal antibody supplied in PBS with 0.09% (W/V) sodium azide. This antibody is purified through a protein A column, followed by peptide affinity purification.

**Storage**

Maintain refrigerated at 2-8°C for up to 2 weeks. For long term storage store at -20°C in small aliquots to prevent freeze-thaw cycles.

**Precautions**

Zebrafish fabp10a Antibody (Center) is for research use only and not for use in diagnostic or therapeutic procedures.

**Zebrafish fabp10a Antibody (Center) - Protein Information****Name** fabp10a**Synonyms** fabp10

**Function** Binds hydrophobic ligands, such as cholate, in the cytoplasm. May be involved in intracellular lipid transport (By similarity). Binds one cholate per subunit.

**Cellular Location**

Cytoplasm.

**Tissue Location**

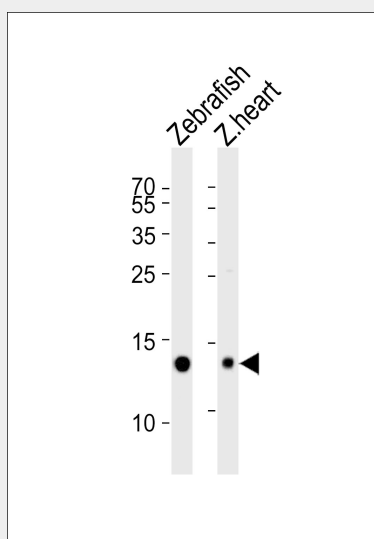
Expressed in the developing embryonic liver from 48 hpf. Also expressed in the liver of 5-day-old larvae. In adults, primarily expressed in the liver, with weak expression in the testis and intestine.

**Zebrafish fabp10a Antibody (Center) - Protocols**

Provided below are standard protocols that you may find useful for product applications.

- [Western Blot](#)
- [Blocking Peptides](#)
- [Dot Blot](#)
- [Immunohistochemistry](#)
- [Immunofluorescence](#)
- [Immunoprecipitation](#)
- [Flow Cytometry](#)
- [Cell Culture](#)

**Zebrafish fabp10a Antibody (Center) - Images**



Western blot analysis of lysates from Zebrafish and zebrafish heart tissue lysate (from left to right), using Zebrafish fabp10a Antibody (Center) (Cat. #AP20693c). AP20693c was diluted at 1:1000 at each lane. A goat anti-rabbit IgG H&L (HRP) at 1:5000 dilution was used as the secondary antibody. Lysates at 35ug per lane.

**Zebrafish fabp10a Antibody (Center) - Background**

Binds hydrophobic ligands, such as cholate, in the cytoplasm. May be involved in intracellular lipid transport (By similarity). Binds one cholate per subunit.

**Zebrafish fabp10a Antibody (Center) - References**

Denovan-Wright E.M.,et al.Biochim. Biophys. Acta 1492:227-232(2000).  
Her G.M.,et al.Dev. Dyn. 227:347-356(2003).  
Her G.M.,et al.FEBS Lett. 538:125-133(2003).  
Sharma M.K.,et al.FEBS J. 273:3216-3229(2006).  
Capaldi S.,et al.J. Biol. Chem. 282:31008-31018(2007).